

Deltek Acumen Risk™

Simplified cost and schedule risk analysis

Acumen Risk™ helps you effectively account for and proactively reduce risk exposure resulting in an accurate forecast you can rely on.

Accurate project scheduling and realistic cost forecasting can be the difference between being a project hero and being responsible for project failure.

While current scheduling tools provide a great foundation for project planning, you are still making the strong assumption that your scope is 100% accurate and, regardless of what happens during execution, the project will finish on time.

In reality, projects don't behave this way. Despite the best-laid plans, every project carries uncertainty and risk that all too often lead to cost and schedule overruns.

Acumen Risk™ helps you effectively account for and proactively reduce risk exposure resulting in an accurate forecast you can rely on.

Project Risk Analysis with Acumen Risk

Simply maintaining a list of identified risks doesn't give you insight into the true impact of risk on your project.

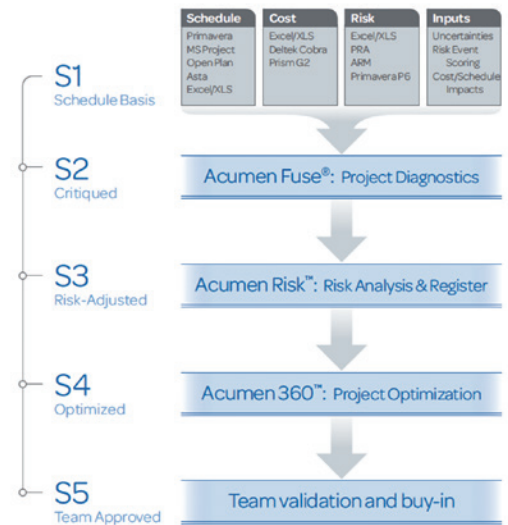
By determining the realism of activity durations in the schedule (uncertainty) and combining this with identified risk events (from the risk register), analysis can be executed to pinpoint not only where your biggest risk exposure lies but also when in your project it's most likely to occur.

Establishing the cause of cost and schedule risk in your project gives you a roadmap for establishing a risk reduction plan (through mitigation) making your risk management effort a pro-active risk-reduction solution rather than an exercise in just shining the spotlight on bad news.

S1 // S5™ Schedule Maturity Framework

Today, hundreds of projects around the world have benefited from the Acumen S1 // S5 approach to risk management.

By pursuing five levels of identified maturity, projects are able to establish schedules that are validated; have accounted for risk; have been optimized and mitigated in order to achieve a target and have team buy-in on the execution plan. Each level leads to a more successful and more achievable project plan.



The S1 // S5™ Schedule Maturity Framework

Acumen Risk Overview

Acumen Risk is an integrated cost and schedule risk analysis tool that integrates a project team's existing risk register into a highly accurate risk-

Acumen Risk provides those reports that truly matter.

Risk do the rest. The result: an accurate cost risk forecast that truly accounts for schedule risk exposure where relevant.

Whether you've already established a project risk register in an external tool, or you want to start from scratch, take advantage of the Acumen Risk risk register module. Track current state, and target or mitigated state as well as the steps needed to get there. Let Acumen Risk analyze the cost/benefit ratio and effectiveness of your proposed mitigation plan in order to make smarter, more informed decisions.

Intelligent Risk Reports

Some risk tools boast hundreds of risk reports, but few really give you the insight you're looking for. Acumen Risk provides those reports that truly matter:

Team's Perception of Risk

Executive summary of how many activities were perceived as aggressive, realistic or conservative. A great way to determine the team's schedule buy-in.

Risk Exposure

A next-generation risk distribution report—quickly determine risk ranges, contingency, risk-adjusted values such as P50 and P75 dates, costs and risk exposure reporting for any given activity or WBS grouping.

Risk Drivers

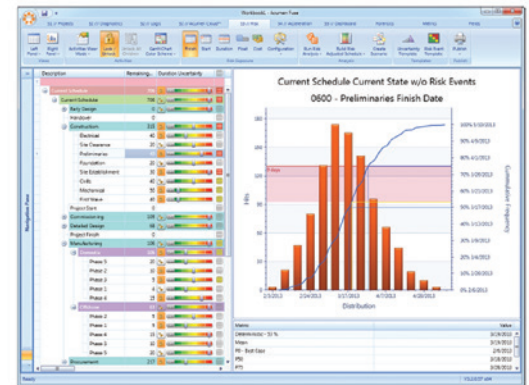
Pinpoint which activities, risk events and driving paths are the leading cause of your project's cost and schedule risk exposure.

Risk Comparison

Visually compare risk profiles across multiple scenarios including alternate mitigation strategies.

Acumen Risk Metrics

Take advantage of the numerous risk metrics built-into Acumen Fuse to further slice and dice your analysis.



Acumen Risk's risk exposure report

What If Scenarios

During early concept, leading up to project sanction or even during execution, risk analysis is an invaluable tool for generating alternate scenarios. At the click of a button, run what-if analysis, or generate alternate scenarios including:

- Mitigated vs. non mitigated,
- Option A vs. Option B, or
- Finding the two main network paths that carry the most risk driving out the completion date (e.g. facilities vs. pipeline)

Once generated, simply compare risk exposure for each scenario and make informed decisions about the best path forward. With Acumen Risk, risk analysis finally becomes a strategic component within your organization.

The Risk Contribution Factor™

Unique to Acumen Risk, the Risk Contribution Factor™ is a quantitative measure (cost and schedule) of how much impact activities and risk events have on any given milestone or group of activities.

Rather than looking at an ordered list of activities in a traditional tornado chart showing relative impact, quickly pinpoint true risk contribution.

